



Karon Dyer
 Cell: 540-798-6133
 Email: karon.dyer@longandfoster.com



Pat Underwood
 Cell: 330-8907
 www.PatUnderwood.com



Mark Lee
 Cell: 529-2092
 www.MarkSellsRoanoke.com



BOTETOURT

- Hardwood Floors
- 1st Floor Laundry
- 2 Car Garage
- 2600 +/- sq. ft.
- \$239,950
- ML #753069
- Call Pat at 330-8907



LAND - LAND - LAND BOTETOURT

- 15 +/- acres
- Lees Gap Road
- \$97,000
- Call Pat at 330-8907



COLONIAL BOTETOURT

- 4 Bedrooms
- 2.5 Baths
- .90 Acre Lot
- Full Basement
- ML #750692
- \$224,950
- Call Karon at 798-6133



ROANOKE CITY

- 3 Bedrooms, 1.5 Baths
- Hardwood Floors, LR, DR, full basement, covered porch, garage
- Over 1/2 acre
- Only \$116,950
- Call Pat at 330-8907



CRAIGS CREEK

- 1 Bedroom
- Deeded right to Craigs Creek
- One acre
- Trail Access
- Call Mark Lee at 529-2092



JUST LISTED

- One Owner
- 4 Bedrooms
- 2 Baths
- 1758 sq. ft.
- Park-like Yard
- Move-in Condition
- \$143,950
- ML #761164
- Call Karen at 798-6133

NEW LISTING

This Is A Super Fantastic Cottage Style Home Minutes From The Lake & Golfing Clubs. Peaks Of Otter Winter

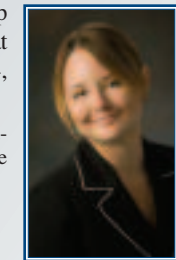


Views From Back Deck

Make This Private Retreat Worth Touring. Open, Airy, Light & Bright Due To The Vaulted Ceilings & Extra Windows Double Car Garage, Large Yard & Deck Allow For Outdoor Living Areas New Landscaping All Appliances

Stay. New high efficiency heat pump 7/10. Price is \$139,000 (appraisal 6/10 at \$139,000). OPEN SUNDAY 2-4, August 22 UNLESS SOLD.

Dir: 460 to RT Gus Nicks to Rt on Goodview Rd to Rt on Rock Spring @ Sycamore Golf Club Sign



If It's Here, It's Fabulous!

KELLY SHINGLETON
 REALTOR®



540-797-5483

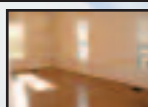
kelly.shingleton@longandfoster.com

Welcome Home

to your historical 1910 remodeled property. Old SW charm and updates to electrical, roof 2 years old, and complete redo of stairs, kitchen & 2 full baths. 3 BR, den, Upper laundry, new walls & original hardwoods in fabulous condition. Alley access for easy parking. Recently reduced to \$139,000. OPEN SUNDAY 2-4, Sept. 5 UNLESS SOLD.

Franklin toward downtown to left on King George

Close to Hospitals!



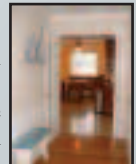
Colonial Place Luxury Patio Home

SW County 419 toward Salem to left on Colonial Ave to right on Colonial Place. Wow factor 3 BR with chef's kitchen, top of the line upgrades everywhere & vaulted ceilings. Gas FP sets a fabulous mood w/the open concept great room. 2 car finished garage with storage galore. Come tour NOW before it's gone! Fresh, fine and fierce one level living. No ext. maint. Patio Home. \$229,777. Seller pays up to \$2,000

credit to Buyer with a full price offer. OPEN SUNDAY 2-4, August 22 UNLESS SOLD.



Low Price \$319,900



New Listing Brentwood CT. SW County

4 BR 2 full & 2 half baths Kingston Court Stately Colonial within walking distance to Hidden Valley High. Updates include new C/A unit, high end appliances, side by side fridge & washer/dryer w/granite eat in kitchen. Beautiful open floor plan but has formal living & dining rooms as well. Den, family room & huge 2 car garage. County maintained grass field in back. OPEN SUNDAY 2-4, Sept. 5 UNLESS SOLD.