



Rick Hillman, GRI
www.RickHillman.com
 540-525-0681



Judy Hillman,
 GRI, ABR, ASP
www.JudyHillman.com
 540-525-0680



**Evening and
 Weekend Calls**
WELCOME!



Elden Dean
eldendean@aol.com
 540-353-6943



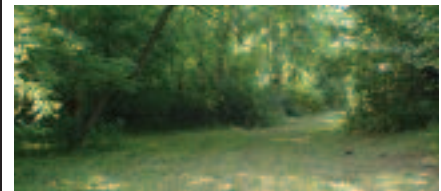
Zach Caldwell
www.ZachCaldwell.com
 540-330-4845



- Secluded, Pristine Wooded Parcel
- 55 ac, Hike, Hunt, Build
- Botetourt Co., Private \$123,000



- Views, Views, and more Views
- 26 ac to Build Your Retreat
- Botetourt Co., Wildlife \$99,500



- 42 Acres \$139,000
- Botetourt Co.
- Private Retreat, Room to Roam



- Craftsman style home in great location
- Hardwood floors, large rear deck
- Rocking chair front porch, 3 BRs, 1 BA
- Full walkout basement, Roanoke, \$156,950



- Completely Remodeled, 3 BRs, 1 BA
- 1.1 ac., Everything new, take a look
- Botetourt Co., Views, \$139,900



- Private Yard w/Deck & Patio
- Open Floor Plan, 3 BRs, 2 BAs
- Roanoke, New Carpet \$175,000



- 5 ac, 3 BRs, 3 BAs, Bonus Room
- Across from National Forest
- Botetourt Co., Quiet \$399,000



- Charming Ranch on Quiet Street
- Hardwood Floors Throughout
- Covered Porch and Covered Deck
- Roanoke, 3 BRs, 1 BA, \$79,900



- 3 BR, 2 1/2 BA, Large Mature Lot
- 2 Decks, 2 Cov'd Porches, Large Shed
- Buchanan, Mt. Views, \$149,000



- The Clegg House - circa 1820
- Historic Register - Commercial or Residential
- Buchanan, VA \$159,000



- Botetourt County \$200,000
- 33 Acres, Private, Wooded
- Old House "As Is"
- 220N Beyond Fincastle



- Working Convenience Store
- Could transition to any Retail Business
- Botetourt Co., Great Location, \$239,000